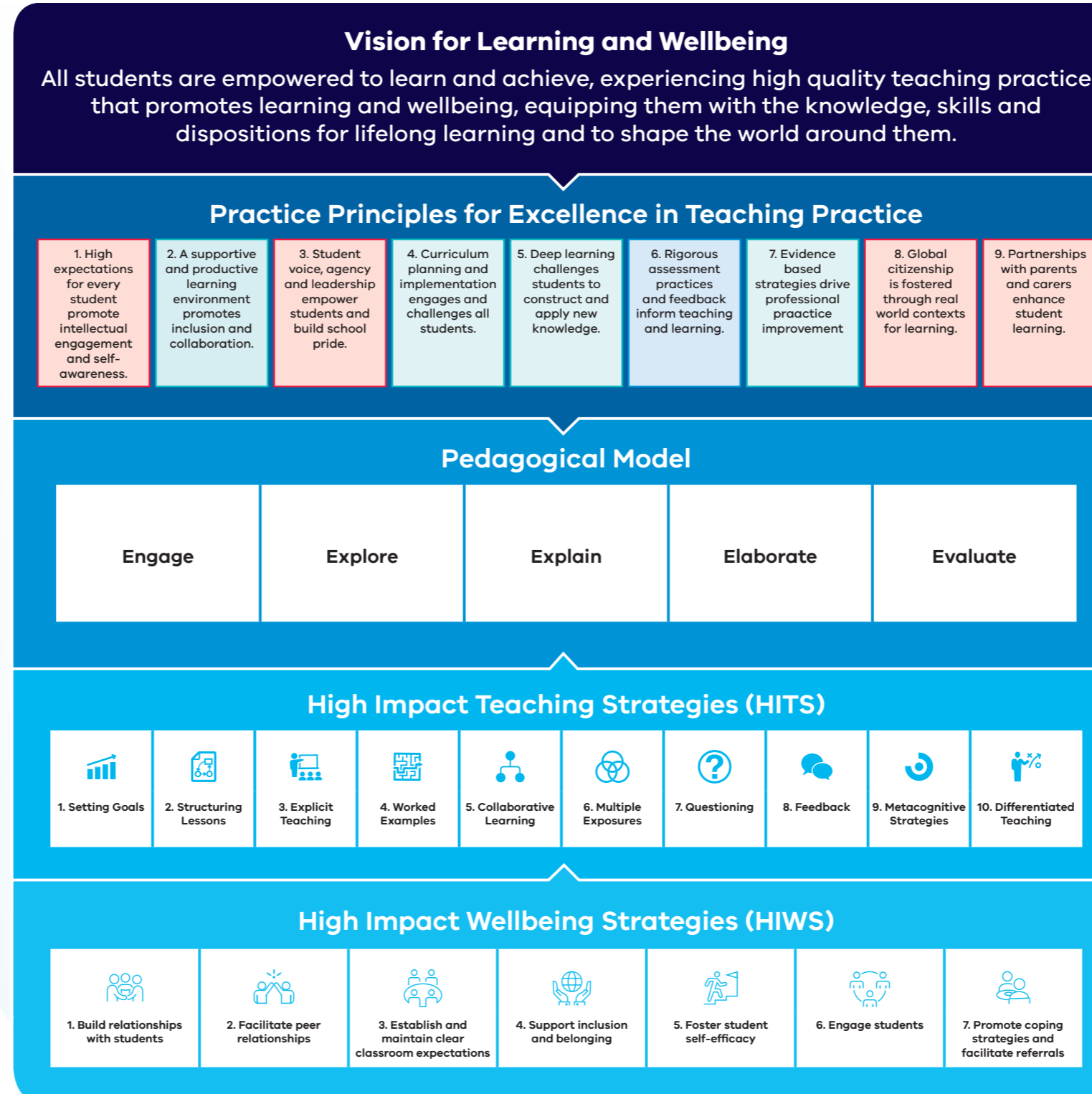


The **Framework for Improving Student Outcomes (FISO 2.0)** helps schools lift student outcomes and build system capability



The **HITS** are 10 instructional practices that reliably increase student learning wherever they are applied

Victorian Teaching and Learning Model (VTLM)



A **Vision for Learning and Wellbeing** helps create a unified set of values and beliefs to drive a high performance learning culture

The **Practice Principles** are 9 signature pedagogies which make the difference in improving student achievement and motivation

The **Pedagogical Model** describes what effective teaching looks like in the classroom and helps teachers apply the Practice Principles

The **High impact Wellbeing Strategies (HIWS)** are 7 practical, evidence-based strategies that have a significant effect on student wellbeing

* The Victorian Early Years Learning and Development Framework (VEYLDF) is a resource for primary school teachers. Abilities Based Learning and Education Support (ABLES) is a resource for teachers of students with additional learning needs whose achievement is described in the Victorian Curriculum Towards Foundation, levels A to D.

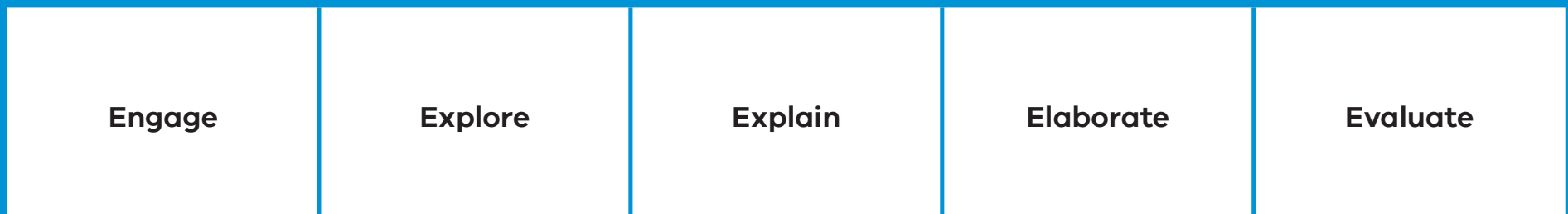
Vision for Learning and Wellbeing

All students are empowered to learn and achieve, experiencing high quality teaching practice that promotes learning and wellbeing, equipping them with the knowledge, skills and dispositions for lifelong learning and to shape the world around them.

Practice Principles for Excellence in Teaching Practice

1. High expectations for every student promote intellectual engagement and self-awareness.
2. A supportive and productive learning environment promotes inclusion and collaboration.
3. Student voice, agency and leadership empower students and build school pride.
4. Curriculum planning and implementation engages and challenges all students.
5. Deep learning challenges students to construct and apply new knowledge.
6. Rigorous assessment practices and feedback inform teaching and learning.
7. Evidence based strategies drive professional practice improvement
8. Global citizenship is fostered through real world contexts for learning.
9. Partnerships with parents and carers enhance student learning.

Pedagogical Model



High Impact Teaching Strategies (HITS)

1. Setting Goals
2. Structuring Lessons
3. Explicit Teaching
4. Worked Examples
5. Collaborative Learning
6. Multiple Exposures
7. Questioning
8. Feedback
9. Metacognitive Strategies
10. Differentiated Teaching

High Impact Wellbeing Strategies (HIWS)

1. Build relationships with students
2. Facilitate peer relationships
3. Establish and maintain clear classroom expectations
4. Support inclusion and belonging
5. Foster student self-efficacy
6. Engage students
7. Promote coping strategies and facilitate referrals