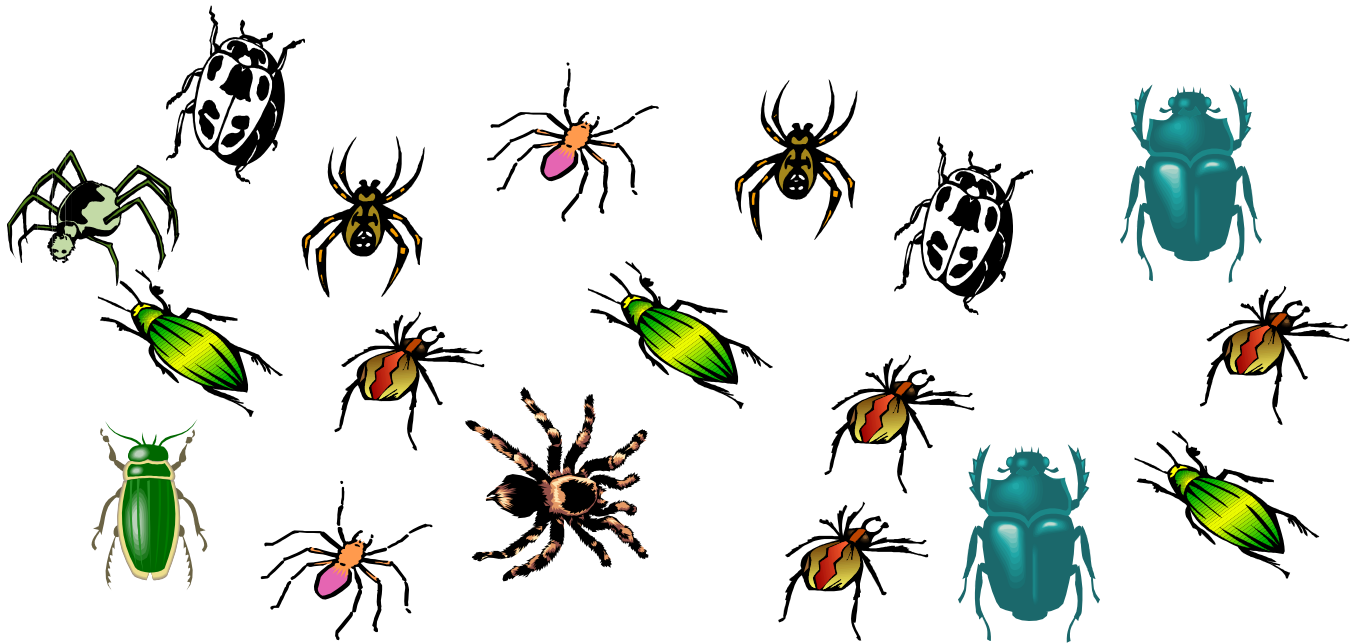


SPIDERS AND BEETLES



A mad scientist insists he knows how many spiders and how many beetles he has in his special enclosure simply by knowing the total number of legs and bodies.

If the floor sensor of the enclosure tells him that there are 174 legs and the infra-red detector indicates that there are 26 bodies, how many spiders and how many beetles are there in the enclosure? Explain your answer.

Hint:

Think of a simpler problem, eg, 15 sheep and emus, 54 legs. How many sheep and how many emus?