

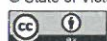
Kindergarten Infrastructure and Services Plan

Surf Coast Shire

CONTENTS

1. Introduction	3
1.1. Reform context	3
1.2. Purpose of Kindergarten Infrastructure and Services Plans (KISPs).....	3
1.3. Structure of the KISP	4
1.4. Disclaimer	4
2. Map of Early Childhood Education services in Surf Coast Shire.....	5
3. Local context	6
3.1 Purpose	6
3.2 Key considerations	6
4. Unmet demand estimates between 2025 - 2036 for Surf Coast Shire	12
4.1 Purpose	12
4.2 Methodology	13
4.3 Summary of current kindergarten provision.....	14
4.4 Agreed estimates of demand for kindergarten places	15
5. Authorisation	17

© State of Victoria (Department of Education) 2024



Kindergarten Infrastructure and Services Plan Surf Coast Shire Council is provided under a Creative Commons Attribution 4.0 International licence. You are free to re-use the work under that licence, on the condition that you credit the State of Victoria (Department of Education), indicate if changes were made and comply with the other licence terms, see: [Creative Commons Attribution 4.0 International](https://creativecommons.org/licenses/by/4.0/)

The licence does not apply to:

- any images, photographs, trademarks or branding, including the Victorian Government logo and the DE logo; and
- content supplied by third parties.

Copyright queries may be directed to copyright@education.vic.gov.au



Department
of Education

1. Introduction

1.1. Reform context

The Victorian Government's \$14 billion Best Start, Best Life (BSBL) reforms are the most significant change to Victoria's early childhood sector in a generation.

The BSBL reforms include:

- **Free Kinder:** Free Kinder is now available for Victorian 3- and 4-year-old children at participating services in standalone (sessional) kindergartens and long day care centres – a saving of up to \$2,500 per child, every year.
- **Pre-Prep:** Four-Year-Old Kindergarten will gradually transition to 'Pre-Prep' – increasing to a universal 30-hour-a-week program of play-based learning for 4-year-old children in Victoria by 2036.
- **Three-Year-Old Kindergarten:** the continued roll-out of Three-Year-Old Kindergarten, with programs increasing to 15 hours a week across the state by 2029.
- **Early learning and childcare centres:** the establishment of 50 Victorian government-owned and operated early learning and childcare centres. These centres will be built in areas with the greatest need and will make it easier for families to access early childhood education and childcare. The first of the centres will open in 2025.

These initiatives demonstrate a clear commitment to improving early learning outcomes for Victorian children, workforce participation and access for families, and present the most significant change to Victoria's early childhood sector in a generation.

Pre-Prep will roll-out in Surf Coast Shire in 2028. Statewide, Aboriginal and Torres Strait Islander children, children from a refugee or asylum seeker background, and children who have had contact with Child Protection services, will be able to access up to 25 hours of Pre-Prep in 2026, increasing to up to 30 hours from 2028. Children who have (or have a parent or guardian who has) a Commonwealth concession card and children who are a multiple birth child (triplets or more) across the state will be able to access up to 25 hours of Pre-Prep in 2028, increasing to up to 30 hours from 2030.

1.2. Purpose of Kindergarten Infrastructure and Services Plans (KISPs)

New and expanded infrastructure is key to delivering the BSBL reforms and will require a large expansion of kindergarten facilities across the State. KISPs, which are jointly developed with Local Governments, indicate where and when new infrastructure will be required to support both reform implementation and population growth in each of Victoria's 79 local government areas (LGAs). KISPs help all kindergarten providers meet demand and collectively provide a clear picture of infrastructure need across the State.

KISPs support planning for services and future capital works and include detailed information about:

- Current capacity and demand for funded kindergarten

- Capacity to be delivered for planned infrastructure projects and future demand for kindergarten
- Forecast 'unmet demand' for kindergarten – that is, the kindergarten places needed that cannot be met by current or planned capacity
- Information specific to each local government area and its early childhood education and care landscape.

KISPs were initially developed to support the roll-out of Three-Year-Old Kindergarten and have now been updated to incorporate Pre-Prep.

KISPs are intended to support planning. They are not funding documents and do not commit any party to addressing the unmet demand identified.

However, it is expected that future investment requests through Building Blocks and funding decisions about Local Government, not-for-profit projects (including non-government schools) would align with the relevant KISP (including Section 3: Local Context).

1.3. Structure of the KISP

Each KISP consists of the following sections:

- **Section 1:** A short introduction to the Best Start, Best Life reform and the KISP.
- **Section 2:** A map of existing and planned Early Childhood Education and Care services.
- **Section 3:** Local context and knowledge of key information in Surf Coast Shire relevant to early childhood education.
- **Section 4:** Unmet demand estimates in Surf Coast Shire over the life of the reform.

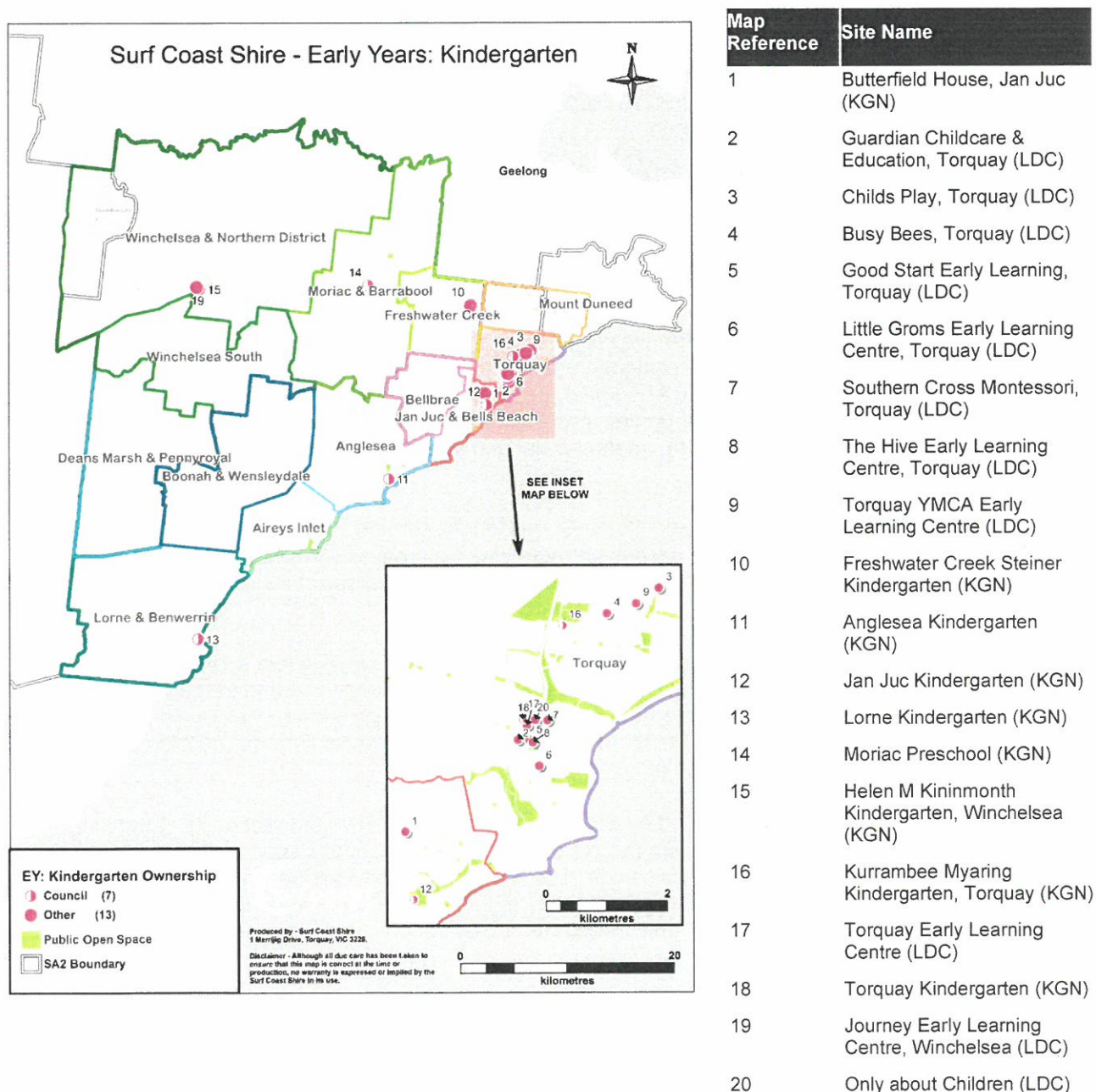
1.4. Disclaimer

All data presented in this document is published for information purposes only. Operational and business decisions should not be based solely on this document. Neither the Department nor Surf Coast Shire warrants, guarantees, makes any representation or assumes any duty of care in relation to the data, including as to its suitability, completeness, accuracy or adequacy.

2. Map of Early Childhood Education services in Surf Coast Shire

The map below shows the distribution of currently operating and new State-supported services that are planned to open in the future in Surf Coast Shire. Planned services by the private sector are not included. Please note: not all services listed have opted in for Free Kinder.

This map has been prepared using departmental data, from both the National Quality Agenda IT System (NQAITS) and the Victorian School Building Authority (VSBA).



3. Local context

3.1 Purpose

Local, place-based knowledge and context play an important role in supporting the implementation of the BSBL reforms across Victoria. This section of the KISP documents this knowledge and context and should be considered alongside the kindergarten demand estimates in Section 4.

Information provided as local context may support applications through the Building Blocks Capacity Building and Planning Grants streams.

3.2 Key considerations

Aboriginal Self Determination in Early Childhood Education and Care

Early Childhood Education plays an important role in facilitating the learning of Aboriginal and Torres Strait Islander culture and history recognizing that this will create a more inclusive and welcoming environment for all children.

Surf Coast Shire recognizes the importance of reconciliation with Traditional Owners and other Aboriginal and Torres Strait Islander people in our community through respectful engagement, acknowledgment and collaboration which is highlighted as the first theme in the Council Plan.

Surf Coast Shire has a community vision that highlights the importance of Self Determination which informed that council plan. Principle 10; Respectful Engagement and Consultations with First Nations.

“With self-determination at the center, we will strengthen relationships to collaboratively achieve meaningful change as we continue along the reconciliation journey. Surf Coast Shire must engage and collaborate with the appropriate Aboriginal representatives including Eastern Maar, Wadawurrung registered Aboriginal parties, and Wathaurong Aboriginal Cooperative to ensure all actions respect the traditions, culture, health, social and other needs of the Aboriginal communities”.

The broad reconciliation efforts of Surf Coast Shire Council provide Early Childhood Education and Care services with opportunities to access partners which increases learning and education surrounding the culture of our First Nations people through, conversations which build a collective understanding.

Surf Coast Shire understands the importance of working with the appropriate networks and departments to ensure that Aboriginal and Torres Strait Islander families living in the area, feel supported and welcome to attend the Early Years service. Through partnerships, such as Koorie Engagement Support Officers and Department of Education we can ensure our policies and programs are reflective to the needs of the community.

In the Kindergarten services operated by Surf Coast Shire Council we support building genuine relationships with our local First Nation people through creating Kinder Reconciliation Action Plans using the Nurra Gunna Wali curriculum audit at each service. Kindergarten staff critically reflect on the eight Aboriginal Ways of Learning and the indicators of an inclusive and supportive early years learning environment for Aboriginal and Torres Strait Islander children and their families.

Key demographic trends that influence demand for kindergarten

Demographic trends

The following context is sourced from the Surf Coast Shire Council Plan:

- the socioeconomic landscape has changed considerably over the years and the influx of higher socio-economic 'sea-changers' migrating from Melbourne has led to rising house prices and (along with the growth of the short stay accommodation market) decreases in affordable rentals
- the age distribution in the Shire is unusual for a regional municipality with strong family growth, yet almost 30% of the population aged over 60 within the next twenty years, and
- smaller coastal towns are ageing more rapidly than the rest of the Shire and attracting fewer families.

Council forecasts the following early years population trends which considers birth rates:

- **Lorne-Anglesea:** declining population from 2024-2032.
- **Torquay:** declining population from 2024-2026, then growth in population from 2027-2032. 2032 population projected to be approximately the same as 2024 population.
- **Winchelsea:** declining population from 2024-2027, then growth in population from 2028-2032. 2032 population projected to be higher than 2024 population.

It should be noted that the estimates of demand contained within this document are based on the midpoint between the population forecasts from Council (discussed above) and Victoria In Future projections of population.

Council also collects birth rate data, which can provide further context for potential demand for kindergarten services in Surf Coast. This does not take into account children born outside the Surf Coast Shire that would potentially attend kindergartens within the Shire, for example, those who move into the region following birth. It does, however, provide further context for potential future demand for kindergarten. (noting that birth rates are just one indicator of future demand, the other being future migration of families to the region).

The trend for birth rates across the municipality indicates that whilst there was a spike in births during the COVID-affected years of 2020/21 and 2021/22, generally speaking birth rates in all townships are decreasing, with the possible exception of Winchelsea (see Table 1). This suggests that initial demand for 3 and 4-year-old kindergarten in 2023-2026 may be higher than in future years of the rollout period.

Table 1. Births in Surf Coast Shire by township, 2018/19 to 2023/24

Birth year	Torquay	Winchelsea	Anglesea	Lorne	Moriac
2018/19	392	33	28	8	22
2019/20	348	39	28	12	23
2020/21	390	47	40	12	31
2021/22	378	45	35	8	29
2022/23	290	63	25	5	26
2023/24	265	53	24	5	16

Family preferences

Feedback from Council-provided kindergarten staff regarding family preferences indicates:

- strong community enthusiasm for extended kindergarten hours, especially among families with two working parents or without additional family support.
- Lorne families would prefer the kindergarten to be open for more days across the week, rather than longer days for a shorter week. They would prefer the hours to be structured around school hours.
- current demand trends indicate preference for sessional kindergarten, with families valuing flexibility in session lengths and balance between home and educational services.
- sessional kindergarten favoured for consistency in teachers, social interactions, and community engagement opportunities.
- accessibility to facilities and community resources, as well as the overall atmosphere and educational program quality, influence parent preferences for sessional kindergarten
- extended hours to cater for working families is the preference for Long Day Care provided kindergarten – with the wrap around hours and the start and end of the day for extra care.

An analysis of kindergarten enrolment data indicates that the vast majority of children are enrolled in kindergartens in the suburbs in which they reside (approximately 88% of 2024 enrolments). While this does not take into account long day care service enrolments, this provides an indication that families tend to enrol their children in the closest kindergarten to where they live rather than travelling to another suburb.

Projects or trends that may influence supply of early childhood education and care

Private long day care and integrated kindergarten programs

In 2015, there were 3 Long Day Care Providers in Torquay with integrated kindergarten. In 2024 there is 11 Long Day care services operating kindergarten. Council's six standalone sessional kindergarten remains the sole provider of free Three and Four-Year-Old kindergarten in the municipality providing significant benefit to our local community and achieving the Best Start, Best Life kindergarten reform objectives of:

- saving families money
- supporting women to return to the workforce.

The significant increase in private provider delivered long day care and integrated kindergarten programs since 2015 may relieve pressure on Council's standalone sessional kindergarten services and provides the following important benefits to our community that are supported by Council:

- more choice for families to find a service that meets their needs
- more services creates pricing competitiveness
- greater access to kindergarten and childcare for vulnerable families
- helps attract high quality early childhood professionals to the area
- contributes to the local economy by allowing families to return to work, and
- allows Council to operate within the limitations of its existing infrastructure to provide services

Free Kinder Opt in

Another consideration regarding the rollout of the Best Start, Best Life reforms is whether existing kindergarten providers in the Surf Coast Shire currently have fee structures that may inhibit kindergarten demand in the future.

Each year Kindergarten service providers will be asked to opt in to Free Kinder based on the funding amount offered by the Department of Education. While Free Kinder is taken up by the majority of services across the Shire, this has the potential to change as funding rates are released and operating costs are increased due to various factors such as wage increases and cost of materials.

Private integrated settings, such as Long Day Care services, can be unpredictable in terms of kindergarten place availability. This is often influenced by business decisions, such as prioritising the high demand for 0–3-year-old Child Care Subsidy (CCS) places and workforce shortage, which may limit the number of kindergarten places offered.

Residential development

The Victorian Government has approved the finalised the Distinctive Areas and Landscapes - Surf Coast Statement of Planning Policy (DAL SPP). It is now operational and forms part of the Victoria Planning Provisions. The DAL SPP will influence and inform future urban growth in Torquay/Jan Juc. The future zoning of the Spring Creek Precinct will be determined by State Government.

Council has adopted the Urban Futures Strategy to guide urban growth in the Surf Coast Shire to meet the housing needs of future populations. The strategy will ensure that residential development occurs in appropriate locations, that significant landscapes and the natural environment are protected, and that development aligns with community aspirations. The state government's housing target for Surf Coast Shire is 8,000 additional dwellings to be provided by 2051.

Key local geographic considerations or information relevant to Three-Year-Old Kindergarten and Pre-Prep

Winchelsea Statistical Area (SA2)

Council has designated Winchelsea as an area for growth – it is attractive to young families due to its lower-cost housing and rural lifestyle. However, many residents work in nearby Torquay, Wairn Ponds, Geelong and Colac – and some prefer to enrol their children in kindergartens nearer to their workplace (and to schools).

This phenomenon may suppress the demand for kindergarten services in Winchelsea (despite population growth).

Another consideration for the Winchelsea SA2 is the number of children from priority cohorts eligible for Pre-Prep additional hours. This may include children with additional needs and experiencing vulnerabilities who under the rollout schedule will receive access to the additional funded hours of Pre-Prep earlier than other children in the LGA.

An analysis of population data for the Winchelsea SA2 indicates that the unmet demand projected by the Department is manifesting predominantly in the Winchelsea area (Winchelsea & Northern District, Winchelsea South and Deans Marsh & Pennyroyal) rather than the Moriac area (Moriac & Barrabool and Freshwater Creek). This is something that Council may consider further in relation to the infrastructure needs of the SA2.

It is important to highlight the timing of the unmet demand emerging in Winchelsea as it is at the same time as the Pre-Prep hours are required to increase.

In Winchelsea, Kindergarten is operated out of one standalone service – Helen Mary Kininmonth Kindergarten (HMK) and the private Long Day Care centre. HMK is a single unit service operated out of a uniting church building that Surf Coast Shire Council lease from them. This building has no opportunity for growth due to aging building and footprint and with the unmet demand projected for

Winchelsea, considered planning is vital to ensure future Kindergarten places are available to match the future population growth.

Torquay Statistical Area (SA2)

The phenomenon of Winchelsea families, families that go to Moriac en route, and hinterland families enrolling their children for kindergarten in Torquay (mentioned above), may elevate the demand for services in Torquay.

Lorne-Anglesea Statistical Area (SA2)

Lorne appears to have a relatively static early years population, despite a significant proportion of the population being transient (the ebb and flow seems to have limited effect on actual numbers). Lorne's geographic isolation limits daily commuting, and therefore somewhat ring-fences kindergarten demand.

An analysis of population data for the Lorne-Anglesea SA2 indicates that the majority of 3- and 4-year-old children are located outside of Lorne (i.e. in Anglesea, Aireys Inlet and Boonah & Wensleydale) which suggests that any future unmet demand projections are most likely occurring outside of Lorne which won't necessarily be indicated when estimating population at the SA2 level. This is something that council may consider further should unmet demand manifest in the SA2.

Anglesea community house operates an Occasional Care service and has seen an increase in demand for the under 3-year-old age group as a result of funded Three-Year-Old kindergarten. Currently the occasional care service has an extensive waitlist and offers care of up to 5 hours. This model is prohibitive for families returning to the workforce along coastal areas specifically within Aireys Inlet, Anglesea and Lorne and are often required to travel to Torquay or Geelong to access longer hours of childcare.

Other information about the expansion of early childhood services

Impacts of workforce on infrastructure delivery and utilisation

Recruiting a suitable workforce is likely to be a greater challenge in the short-term than infrastructure capacity.

The rapid rise of short-stay accommodation (e.g. Airbnb) has also seen a reduction in the availability and affordability of permanent rental accommodation.

These changes limit the opportunity for young families to move to or live in the Shire and this is particularly evident in Lorne and Anglesea. An effect of this is a reduction in the available workforce and a shortage of suitable applicants for vacant positions.

It is anticipated that recruiting sufficient staff to provide additional kindergarten hours will be problematic especially in rural services.

As mentioned within the key geographical considerations, Lorne, Winchelsea and Anglesea's geographic isolation and transient population also limits the supply of casual kindergarten staff, further restricting service providers' ability to expand their service offerings.

Changes to service models

Council-provided kindergarten staff have indicated the following changes will need to be considered to cater for the implementation of expanded early childhood services:

- Adjustments in scheduling and programming methods to accommodate extended hours.

- Potential need for additional resources to enhance children's experiences.
- Effective communication channels for staff to share children's progress and needs.

Existing infrastructure

Several kindergartens in the municipality are restricted in their ability to offer both 15 hours per week for 3-year-olds as well as 30 hours per week for 4-year-olds due to limitations associated with their ageing facilities, including:

- Standalone service
- Poor design, including inflexible configurations, and
- Land size limitations.

Council-provided kindergarten staff have indicated that physical space constraints may pose challenges, with potential need for room setup changes or reduced group sizes to cater for extended hours.

Council has also developed an audit on its kindergarten facilities to identify future works to address the above limitations.

Council has completed basic concepts designs for enhancement and expansion as two of its operated Kindergartens, Torquay Kindergarten and Jan Juc Preschool, in preparation of projected growth. And if required, this allows for an additional 22 places at Jan Juc Preschool and 30 additional places at Torquay Kindergarten. This planning was part of the boarder audit that was completed to show which services had the potential for expansion using the current footprint.

Based on these operational constraints and non-compliances, the following Kindergartens have been identified for future works and potential investment requests:

- Anglesea Kindergarten – After a co-design process with the community, it has been resolved the current Maternal Child and Health service will be included in the Anglesea Community Hub further increasing the need to re-design and improve the current facility.
- Moriac Pre-School – One kinder room only and an inflexible and ageing Maternal Child and Health space. To meet the increased demand for future services, the facility needs an internal refurbishment and expansion.
- Helen Mary Kininmonth (HMK) Kindergarten – Single room service, run out of a leased building attached to the local Uniting Church. inflexible configurations – future planning will be required to ensure the current demand is able to grow in line with the increased hours and future demand is catered for.

Rollout schedule of surrounding LGAs

It is important to consider that the revised Pre-Prep rollout schedule of the BSBL reforms in surrounding local government areas (LGAs) may impact demand for kindergarten services in Surf Coast Shire. Colac Otway Shire rolls out Pre-Prep in 2027, while City of Greater Geelong rolls out Pre-Prep in 2032.

Strategic reference documents

[Kindergarten Service Statement](#) affirms Council's approach to the provision of kindergarten services and facilities in the Surf Coast Shire. It articulates Council's vision, sets the direction for the

development of integrated models of service delivery at its existing facilities when redevelopment occurs and articulates Council's role as a kindergarten service provider in the shire.

Surf Coast Shire - Our Places and Spaces State of Play 2024

Surf Coast Shire's Our Places and Spaces State of Play provides visibility of all of Council's existing open space and social infrastructure commitments and priorities and provides the data to develop a new strategy and policy to guide Council's future priorities.

The State of Play identifies three 5-year horizons for delivery:

- Horizon One – Align and Optimise (1-5 Years)
- Horizon Two – Review and Realise (5-10 Years)
- Horizon Three – Review and Sustain (10-15 Years)

Each year the delivery program will be tested with community through the Annual Budget process before seeking endorsement by Council.

The Early Years Network within the Plan covers the end-to-end service mix including but not limited to; Kindergarten, Long Day Care, Occasional Care, Family Day Care, Toy Libraries, and Child and Family Health services.

4. Unmet demand estimates between 2025 - 2036 for Surf Coast Shire

4.1 Purpose

As the BSBL reforms are rolled out and Victoria's population grows, demand for kindergarten and Pre-Prep places will increase significantly. While additional capacity will be needed to meet this demand, this will vary across the State and over time, due to differences in the capacity of existing services, growth trends and sector composition.

To identify where, when and how many additional kindergarten places are expected to be required over the roll-out in Surf Coast Shire, Council and the department have developed:

1. a summary of the current provision of kindergarten within Surf Coast Shire (**Section 4.3**).
2. an estimate of kindergarten places that cannot be met through existing services for the 2025 - 2036 period, taking into account the additional demand that can be accommodated by optimising utilisation of existing services and infrastructure (**Section 4.4**).

Local governments and providers can use these published estimates to inform reform implementation activities such as service planning, kindergarten program expansion, infrastructure investments and Building Blocks funding applications in alignment with future demand over the roll-out.

4.2 Methodology

The estimated kindergarten places used in the following sections have been agreed between Surf Coast Shire and the department, and were informed by:

- demand projections developed by the department which draw on a range of inputs, including population forecasts and current enrolments
- the estimated capacity of existing and planned services in the LGA (Section 2)
- where applicable, modelling undertaken by Surf Coast Shire and service level information; and
- local knowledge and context provided by the local government (Section 3) that explains particular issues and trends in their area.

Kindergarten places explainer

The KISP measures a service's capacity to deliver funded kindergarten in terms of the number of **15-hour places** (referred to as "kindergarten places") available for Three-Year-Old kindergarten and Pre-Prep (noting that, by 2036, two kindergarten places will be required for one Pre-Prep enrolment). The number of kindergarten places is different from a service's licensed or approved places, which count the number of children permitted to attend the service at any one time under the license. Many services can enrol more children in their funded kindergarten program(s) than they have licensed places for because they can run more than one kindergarten program per week. Kindergarten places are therefore a more accurate measure of service kindergarten capacity than licensed places.

Kindergarten places have been presented as 15-hour places so that new Three-Year-Old Kindergarten places and the additional 15-hour places required for Pre-Prep can be easily compared to existing 15-hour Four-Year-Old Kindergarten places. This is because, when Three-Year-Old Kindergarten is fully rolled out in 2029, three-year-old children will have access to 15-hours of kindergarten. When Pre-Prep is fully rolled out in 2036, four-year-old children will have access to up to 30-hours of kindergarten, an increase of the current offering of 15-hours per week.

It is important to note that enrolments are not equivalent to 15-hour places. One 15-hour place can support a total of 15 hours of delivery per week split between one or more children, including but not limited to the following examples:

One 15-hour place (15 hours of delivery)		
Example 1	1 child	1 x 3YO attending 15 hours per week
Example 2	1 child	1 x 4YO attending 15 hours per week
Example 3	2 children	2 x 3YOs attending 7.5 hours per week
Example 4	3 children	3 x 3YOs attending 5 hours per week

Two 15-hour places can support a total of 30 hours of delivery per week split between one or more children, including but not limited to the following examples:

Two 15-hour places (30 hours of delivery)		
Example 1	1 child	1 x 4YO attending 30 hours per week
Example 2	2 children	2 x 3YOs attending 15 hours per week
Example 3	2 children	1 x 3YO, and 1 x 4YO both attending 15 hours per week
Example 4	3 children	2 x 3YOs attending 7.5 hours per week, and 1 x 4YO attending 15 hours per week

Geographic boundaries used in the KISP

These estimates have been developed at an LGA and community level to show the overall forecast and variation within an area. The KISP defines community at the Statistical Area Level 2 (SA2), which is a medium-sized area which represents a community that interacts socially and economically, with an approximate population range of 3,000 to 25,000 people, and an average population of about 10,000 people. The KISP uses 2021 SA2 boundaries. More information is available at the [Australian Bureau of Statistics website](#).

Supply contributed by pipeline projects

Surf Coast Shire and the department have added any new places that will be made available through planned expansions of existing services or new services into estimates of existing supply, where this information is available. This may include projects being delivered by not-for-profit providers (including non-government schools) with support from the Victorian Government, planned Kindergartens on School Sites, and government-owned and operated early learning and childcare centres.

The KISP does not estimate how and when the broader sector will expand to meet the additional demand for kindergarten places that are estimated over the roll-out period.

4.3 Summary of current kindergarten provision

The figures below provide a summary of current kindergarten provision within the LGA and provide relevant context for the estimates of demand for funded kindergarten places included in Section 4.5. The data included in this section are largely drawn from:

- the department's Kindergarten Information Management System (KIMS), as at 2023
- the National Quality Agenda IT System (NQAITS), as at April 2025.

Number of services by service type (NQAITS)	
Stand-alone kindergartens	9
Long day care centres (including services not currently delivering funded kindergarten)	11

Percentage of services by management type, LGA level (NQAITS)	
Type	Percentage*
Local Government	30%
Private not for profit	30%
Private for profit	40%

Current kindergarten offering in Surf Coast Shire	
Three-Year-Old Kindergarten participation rate (KIMS):	95%
Four-Year-Old Kindergarten participation rate (KIMS):	103%
Number of services that offer a funded kindergarten program (KIMS):	14

4.4 Agreed estimates of demand for kindergarten places

The below estimates (**Table 3** onwards) have been developed by Surf Coast Shire and the department to illustrate the estimated:

1. Demand – the total number of kindergarten places expected to be required over the roll-out period to support the current provision of Four-Year-Old Kindergarten, the BSBL reforms, and population growth
2. Supply – the total number of kindergarten places that can be accommodated by existing services and infrastructure, and planned, State-supported services which are yet to open.
3. Unmet demand – kindergarten places that cannot be accommodated by optimising existing services and infrastructure (i.e. the shortfall between demand and supply).

Interpreting the estimates

Infrastructure need in the LGA and its local communities is indicated by the bottom rows of the tables in this section (**Table 3** onwards): *Unmet demand*. If the number of kindergarten places in this row is above zero, it means that the area is estimated to need additional infrastructure capacity. Any type of provider – local government, not-for-profit (including non-government schools) or for-profit – can build this additional infrastructure.

Sub-SA2 factors may need to be considered to give a holistic picture of unmet demand. For example, in rural communities, one SA2 may contain several small towns, some with excess supply and some with unmet demand. At the SA2-level, demand may appear to be met because all supply and demand is considered in aggregate; however, it is not feasible to for families to drive long distances to access kindergarten capacity in another town. Sub-SA2 factors are covered in **Section 3: Local context**.

Table 3: Estimated kindergarten places required between 2025 - 2036 in Surf Coast Shire

Surf Coast Shire estimates	2025	2026	2027	2028	2029	2030	2031	2032	2033	2034	2035	2036
Demand for kindergarten	857	876	892	1,054	1,188	1,216	1,418	1,423	1,443	1,472	1,473	1,496
Unmet demand	0	0	0	0	20	30	75	81	93	102	103	114

Community estimates

Table 3-[1]: Estimated kindergarten places required between 2025 - 2036 in Lorne-Anglesea

Community estimates	2025	2026	2027	2028	2029	2030	2031	2032	2033	2034	2035	2036
Demand for kindergarten	73	68	71	88	95	95	117	115	120	123	119	123
Kindergarten supply	155	155	155	155	155	155	155	155	155	155	155	155
Unmet demand	0	0	0	0	0	0	0	0	0	0	0	0

Table 3-[2]: Estimated kindergarten places required between 2025 - 2036 in Torquay

Community estimates	2025	2026	2027	2028	2029	2030	2031	2032	2033	2034	2035	2036
Demand for kindergarten	623	639	650	763	855	873	1,009	1,010	1,013	1,030	1,033	1,041
Kindergarten supply	1,166	1,166	1,166	1,166	1,166	1,166	1,166	1,166	1,166	1,166	1,166	1,166
Unmet demand	0	0	0	0	0	0	0	0	0	0	0	0

Table 3-[3]: Estimated kindergarten places required between 2025 - 2036 in Winchelsea

Community estimates	2025	2026	2027	2028	2029	2030	2031	2032	2033	2034	2035	2036
Demand for kindergarten	161	169	171	203	237	247	293	299	310	320	321	331
Kindergarten supply	217	217	217	217	217	217	217	217	217	217	217	217
Unmet demand	0	0	0	0	20	30	75	81	93	102	103	114

5. Authorisation

The Ms Catriona Salt, Barwon Area Executive Director, the Department of Education and Damian Waight, General Manager Community Life of Surf Coast Shire Council endorse this Kindergarten Infrastructure and Services Plan (KISP) for Surf Coast Shire Council by signing on

14 / 8 / 2025

This KISP is not intended to create legal relations or constitute a legally binding contractual agreement between the parties. The parties may review this KISP in late 2026 to publish a new version that will replace the previous version.

Signed for and on behalf and with the authority of Surf Coast Shire Council

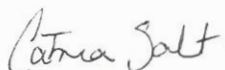


Signature

Name: Damian Waight

Title: General Manager - Community Life

Signed for and on behalf and with the authority of the Department of Education



Signature

Name: Catriona Salt

Title: Executive Director - Barwon