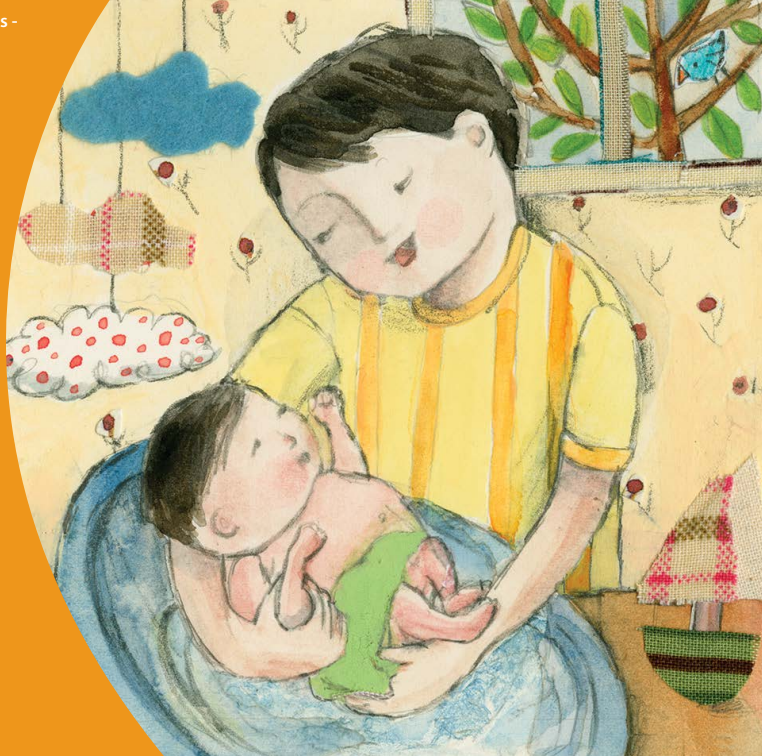


Discover and learn during everyday routines -  
Chin (Hakha)

## Lentecelh Cawn Tthan

Nifatin thil nan  
tuahmi khan  
cawng uh



# Nifatin thil nan tuahmi khan cawng uh

Na fa ca ahcun a  
hmuhmi paoh kha  
a tharmi le  
khuaruahher an si.  
An hmuh  
khawhmi, theihmi,  
tonghmi le a haw  
an theihmi tehna  
kong kha chim  
hna.

- Na fa nih a mithmai le tuahsernak in biaruahnak le a duhnak a langhter lai. Na mit an zoh tikah nih ve.
- Na fa nih aw a ngei, a chuah cang ma? Na fa a aw kha let law bia ruah.
- Nappy thlen le tikhoh caan tehna khi biaruah le hlasakpiaknak ah caan ttha an si. Na fa nih na aw a theih ahkhan aa nuam.
- Kuh le tongh tehna kha aa duhmi le na fa tthanchonak ca ah a tthami an si. Nangmah le na fa pehtleihnak a tthami kha an cawnnak le tthanchonak ca ah a herhtukmi an si.

Tamdeuh theih na duh ahcun Nu le Ngakchia Ngandamnak Zohkhenhtu sii saya/mah kha **13 22 29** ah chawn asiloah **raisingchildren.net.au** ah zoh