

Excellence in Teaching and Learning – Victorian Teaching and Learning Model

OVERVIEW

Victoria's Education State agenda includes the delivery of a suite of system improvement initiatives supporting school-wide development. A key priority of the Department is building teacher capability and supporting schools and teachers with easily accessible guidance and resources to create lasting and impactful change at the classroom level.

To support schools in the development and consistent use of evidence-based practice, the Department has developed a new Victorian Teaching and Learning Model that is embedded in the Framework for Improving Student Outcomes (FISO). The model is the result of close collaboration between the Department and numerous teachers and school leaders across Victoria.

The model provides a consistent, improvement-focused approach to teaching and learning across the system. It builds a shared language of practice, supports teachers to develop their professional practice and provides overarching guidance on all aspects of teaching and learning.

The Victorian Pedagogical Model consists of:

- the Vision for Learning to help create a unified set of values and beliefs, which drive the development of a high performance learning culture
- the Practice Principles to help teachers guide their reflections and conversations about how they teach and how they can improve their practice
- the Pedagogical model to help teachers apply the Practice Principles in their classrooms
- the High Impact Teaching Strategies to focus improvement efforts on the implementation of instructional practices that help improve student learning outcomes.

Theory of Change – Victorian Teaching and Learning Model

If schools implement the Victorian Teaching and Learning Model and consider the ways in which it can refresh school-wide teaching practices

then teachers will be able to improve the precision, quality and consistency of teaching practices

so that students can achieve better learning outcomes.

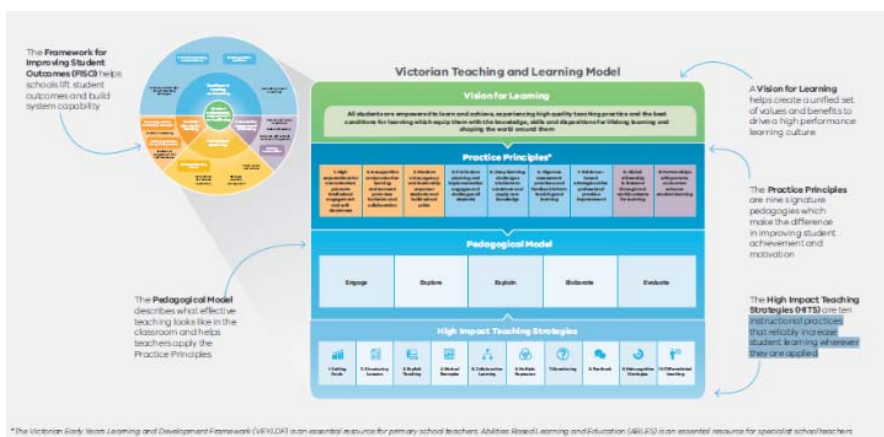
KEY LINKS

The tools and resources that make up the Victorian Teaching and Learning Model can be accessed via the Department's website at: [Improve Teaching Practice](#)

FREQUENTLY ASKED QUESTIONS

How does the Victorian Pedagogical Model align with FISO?

The Victorian Teaching and Learning Model brings FISO into the classroom, creating a line of sight between the whole-school improvement approach and classroom practice. It assists principals, school leaders, teachers, students and parents/carers to work together in strong, effective learning communities that create and sustain better outcomes for students. The Victorian Teaching and



Learning Model allows teachers and school leaders to focus on high impact improvement initiatives and to drive those initiatives through evidence-based decisions about their teaching and student learning.

Who can use the Victorian Teaching and Learning Model?

The Victorian Teaching and Learning Model is an endorsed model that schools may choose to implement, as a whole or in part, in line with their school improvement priorities.

Schools that have successfully implemented an alternative model may explore the Victorian Teaching and Learning Model to determine if their practices align with the current evidence base. The tools and resources included in the Practice Principles, the Pedagogical Model and the High Impact Teaching Strategies (HITS) can assist school leaders and teachers to reflect on teacher practice and assist with planning for improved student outcomes.

Schools not using an evidence-based teaching and learning model can implement the Victorian Teaching and Learning Model as a holistic approach to build teaching and learning excellence. The Department recommends that school leaders and teachers use the resources in line with their Strategic Plans and Annual Implementation Plans and

initially reflect on their current practice using the Vision for Learning and Practice Principles.

What is the Pedagogical Model?

The Pedagogical Model is the final piece in the Victorian Teaching and Learning Model. When implemented together with the Practice Principles and HITS, the pedagogical model enables teachers to maintain a line of sight between their own professional development and school-wide improvement based on FISO.

The Pedagogical Model places student learning at the centre of planning and implementation. It supports teachers to design engaging and challenging learning experiences through planned integration of curriculum, pedagogy and assessment.

The Pedagogical Model is not a recipe for teacher practice but rather a framework to guide reflection and improvement of classroom practice. The five domains of the Pedagogical Model (Engage, Explore, Explain, Elaborate and Evaluate), can be used as a common lens for understanding and improving teaching and learning in different contexts. The Pedagogical Model gives teachers a shared language and framework to facilitate planned and purposeful collaboration.

PROGRESS TO DATE

High Impact Teaching Strategies (HITS) published and released to schools	Jun 2017
Practice Principles published and released to schools	Feb 2018
Pedagogical model published and released to schools	Jun 2018