



# My Career Insights

# Tailored career guidance for your child

The Department of Education gives every year 9 Victorian Government school student free access to the world-leading Morrisby online career education tool.

Morrisby helps your child make informed choices for senior secondary school and beyond by exploring their strengths, interests and career opportunities.

**Your school needs your consent to give your child access to Morrisby.**

The My Career Insights program pairs your child's Morrisby profile with a free one-on-one expert career consultant session, supported by the Australian Centre for Career Education.

This is an important opportunity in year 9. It will help your child update their career action plan, make big decisions and stay motivated to learn.

# The program

# Your role



## Step 1 Your consent

Your school will ask you to complete and return a paper consent form, or provide your consent digitally (for example, through Compass).

Follow your school's instructions to provide your consent.



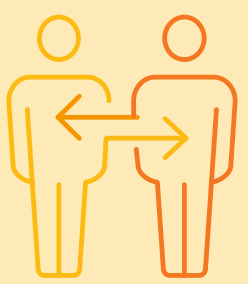
## Step 2 Morrisby profile

Your school will ask your child to complete Morrisby quizzes. Morrisby will use their answers to create a unique profile that:

- summarises their individual strengths and interests
- suggests related career paths and study options.

Look out for communication from your school about the Morrisby profile and Career Consultant interview.

If you'd like to, join your child for their interview.



## Step 3 Career Consultant meeting

Your school will arrange an unpack interview between your child and an independent career consultant, coordinated by the Australian Centre for Career Education. They will talk about how to understand and use Morrisby. You can join this meeting.



## Step 4 Career planning

Your child's Morrisby profile helps them update their career action plan, and navigate their choices for senior secondary education and post-school pathways.

Talk with your child about their profile, interests, strengths, goals and study options.

# Sample Morrisby profile

Your child's completed Morrisby profile will include information about their many skills and strengths. It will also provide school subject and career suggestions that reflect their individual skills, interests, personality and preferences.

## Aptitudes

### Aptitudes: Your potential and relative strengths



Next Step

[Your interests >](#)

#### More Information

- > What do the results mean?
- > What is measured?
- > Why is there a darker segment at the end of each bar?

#### Interpretation

The relatively high level of your numerical ability, compared with the lower verbal and abstract results, suggests that you would feel at home with numbers and figures. This would be very useful in many commercial careers. You may not find it so easy to express your ideas on paper.

You should consider the types of career which match this profile, such as general office and stores work; working in accounts, company records, data processing, insurance offices, banks, business administration and so on.

## Interests

### Interests: Your career interests

#### People



#### Information



#### Things



Next Step

[Your Work Style >](#)

#### Specialist Interests ⓘ



#### Career Families

How interested are you in each of the 49 career families which make up the world of work.

[World of Work chart](#)

[> Retake Questionnaire](#)

You seem most interested in a career path where you help other people to get the most out of their lives. This includes education in the broadest sense, counselling, advice and guidance. You would enjoy helping people to achieve their true potential. In addition your scores show that you are interested in the types of career where you would be working with people in a professional, rather than personal manner. You would enjoy guiding them to make the best decisions. This might include management, sales, politics, marketing, advertising, broadcasting and many others. The results

# Careers

## Careers: Your suggestions and favourites

### Your top suggestions

Careers Level: VCE Voc Major to VCE (ATAR<90)

Change your qualification level

#### Focus On

- Aptitudes
- Interests
- Specialist Interests
- Personality

#### What if I...?

- Obtained a degree
- Focused on Apprenticeships / Traineeships



Career

Logistics (Supply Chain) Manager

92%

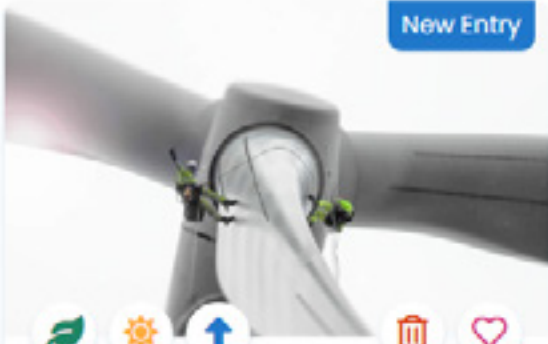
Show 2 related careers



Career

Business Equipment Technician

88%



New Entry

Renewable Energy Technician

87%

### Favourites

No favourites selected

### Search

What are you looking for?

Search Clear

### Explore

Investigate a whole range of career families

Explore

### Binned Careers

Show my binned careers

# Workplace

## Workplace: Your preferences



Regarding workplace, you like the idea of a comfortable, well-equipped building where you can meet new people frequently. You don't like the idea of being stuck away on your own in an office and nor do you want to be outside in all weathers. There are many careers with many employers which will provide this combination. You don't have much desire to find work that is largely physical, nor indeed work that is based outdoors. You probably prefer to be in a relatively comfortable environment, working alongside other people.

### Next Step

Your Personality >

### Preferences

- ✓ Nice Surroundings
- ✓ Meeting People
- ✓ With the Public
- ✓ Non-physical

# Personality Type

## Personality Type: The Coach

Sociable and gregarious, happy to lead and be the centre of attention. Analytical, systematic, realistic and dependable. Focused but flexible, considerate and encouraging.



The main feature of your results is your extraversion result. You enjoy being in the company of others and being the centre of attention. You want to live in the here-and-now and enjoy sharing new experiences with others.

Also of importance is your preference for taking a down-to-earth, realistic approach. You like to base your opinions on your experiences and observations. Whilst imagination and creativity are important

### Next Step

Your Learning Style >

### The Coach

- ✓ Enthusiastic
- ✓ Outgoing
- ✓ Gregarious
- ✓ Factual
- ✓ Analytical
- ✓ Practical

Personality describes the way we think, feel and behave - in short, it is what makes us unique. When considering careers, we often think about having the right skills and qualifications, but having the right personal qualities can be just as important. Our personality type, and the way we act and behave will influence our suitability for some careers more than others. This profile also informs your career suggestions.

> Retake Questionnaire

# Life-long career help

If your child completes their Morrisby profile this year, they can access it through the rest of their schooling, and beyond. As they develop new strengths, interests and goals, they can update their Morrisby profile to get useful study and career suggestions.

Last updated April 2023

