

REGIONAL
EVIDENCE
NORTH EAST

NEVR2019

PROFILE AT A GLANCE

*measuring what
matters*

A photograph of three students, two girls and one boy, sitting at a desk and writing in notebooks. The girl in the foreground has blonde hair and is looking down at her notebook. The other two students are slightly behind her, also focused on their work. The image is partially obscured by a large, dark red geometric shape that covers the left and bottom portions of the page.A graphic consisting of several concentric circles, resembling a target or a ripple effect, located to the left of the title text.




measuring what matters

This booklet provides demographic related information about government schools and selected initiatives in the Department of Education and Training North-Eastern Victoria Region.

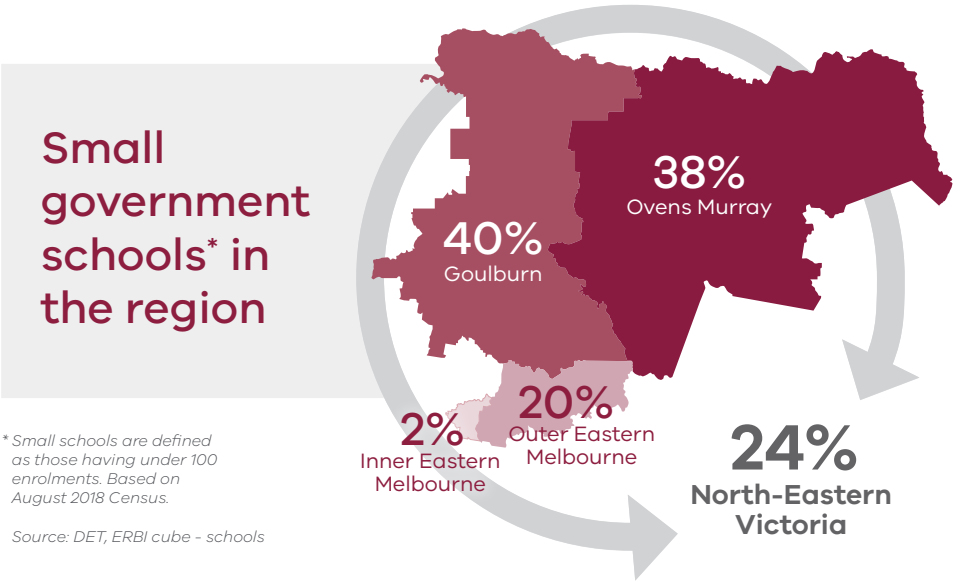
It is designed to assist you by providing key facts you can quickly reference when you need them.

School sector

SCHOOL SECTOR, 2018




	 Government	 Catholic	 Independent	Total
Goulburn	81	20	5	106
Inner Eastern Melbourne	118	49	28	195
Outer Eastern Melbourne	115	24	21	160
Ovens Murray	66	19	9	94
North-Eastern Victoria	380	112	63	555
North-Eastern Victoria	68%	20%	11%	
Victoria	68%	22%	10%	

Source: DET, ERBI cube - schools



Student enrolments

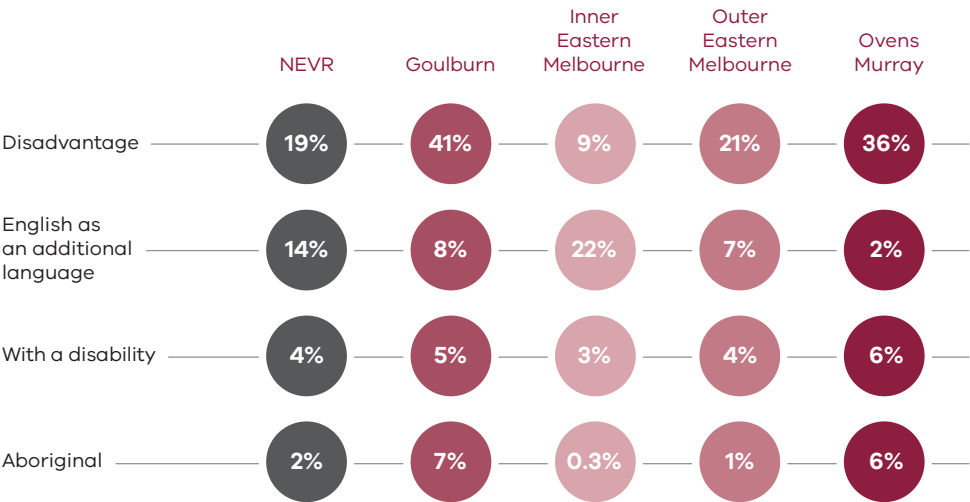
ENROLMENTS BY SCHOOL SECTOR (PROPORTIONS), 2018

	 Government	 Catholic	 Independent
Goulburn	64%	29%	7%
Inner Eastern Melbourne	62%	19%	19%
Outer Eastern Melbourne	67%	16%	17%
Ovens Murray	61%	27%	12%
North-Eastern Victoria	63%	20%	17%
Victoria	64%	21%	15%

Source: DET, ERBI cube - schools

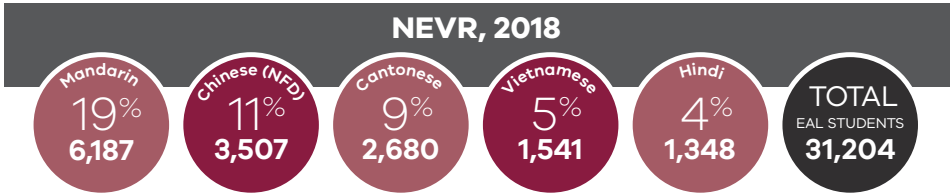
Students with additional needs

PROFILE : NORTH-EASTERN VICTORIA, 2018



Source: DET various sources

Top 5 languages spoken at home (excluding English)



Totals represent students with English as an additional language (EAL).

Source: DET, ERBI cube - EAL

Kindergarten enrolments

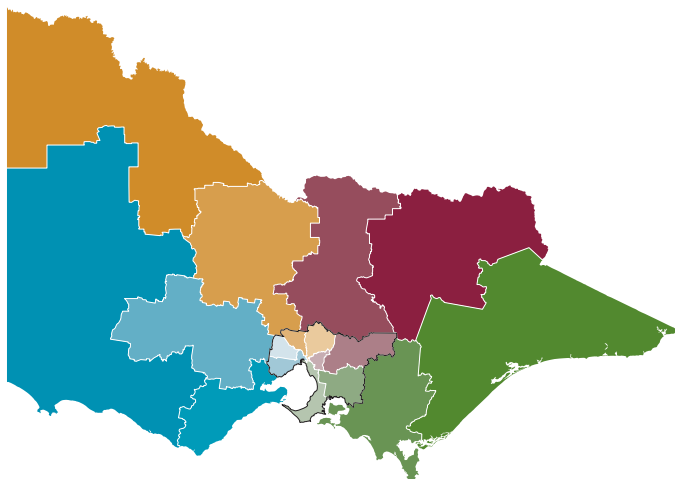
KINDERGARTEN SETTINGS AND PERCENTAGE OF ENROLMENTS, 2018				
	Number of services		% enrolments per setting	
	Sessional	LDC*	Sessional	LDC*
Goulburn	43	36	62%	38%
Inner Eastern Melbourne	132	140	65%	32%
Outer Eastern Melbourne	103	90	65%	24%
Ovens Murray	34	23	63%	33%
North-Eastern Victoria	312	289	64%	30%

*4 year old kindergarten component.

Source: DET, ERBI cube - Kindergarten

PROFILE OF CHILDREN ENROLLED IN 4-YEAR-OLD KINDERGARTEN, 2018			
	Disability	Non-English speaking background	Aboriginal
Goulburn	3%	9%	5%
Inner Eastern Melbourne	4%	36%	0%
Outer Eastern Melbourne	6%	16%	1%
Ovens Murray	7%	4%	5%
North-Eastern Victoria	4%	22%	2%
Victoria	5%	23%	2%

Source: DET ERBI cube - Kindergarten



North-Western Victoria Region

- Mallee
- Loddon
- Hume Moreland
- North Eastern Melbourne



South-Eastern Victoria Region

- Outer Gippsland
- Inner Gippsland
- Southern Melbourne
- Bayside Peninsula



North-Eastern Victoria Region

- Ovens Murray
- Goulburn
- Outer Eastern Melbourne
- Inner Eastern Melbourne



South-Western Victoria Region

- Wimmera South West
- Barwon
- Central Highlands
- Western Melbourne
- Brimbank Melton



**REGIONAL
EVIDENCE**

For more information contact: school.performance.data@edumail.vic.gov.au

The information in this document is subject to change. Contact the Regional Evidence Unit within Performance and Evaluation Division, Department of Education and Training for your regional data queries.