

Identify and respond to child abuse in the community

Provide the right support at the right time

At all times, you must:

- **Respond to an emergency** – Call 000. Preserve evidence. Keep students safe.
- **Adapt to changing circumstances** – Be flexible. Repeat/take different actions.
- **Document your actions.**

Identify child abuse

All staff

You can identify abuse by:

- witnessing an incident
- receiving a disclosure
- observing:
 - physical or behavioural signs
 - something concerning online or on a device.

If you form a reasonable belief that a child has been abused, or is at risk of abuse, inform school leadership.

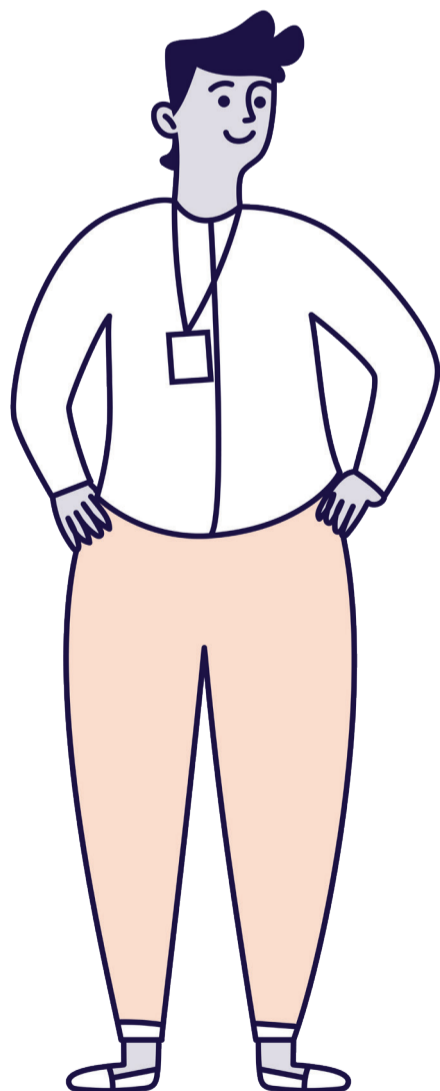
Information Sharing staff/Child Link users

- Request information from Information Sharing Entities or check Child Link.

School leadership/nominated staff

- **Report**
- **Support** and **Refer**

You may need to take actions in support and refer at the same time.



Report abuse to authorities

If you believe a crime has been committed against a child, report to:

- Victoria Police.

If you form a reasonable belief that the parents/carers have not, or are unlikely to, protect the student from significant harm. You must report physical and sexual abuse. Report to:

- Child Protection

You can contact Independent Schools Victoria for support and advice on child safety related matters, including if you are unsure and need advice on reporting.

Engage parents/carers

- If Victoria Police/Child Protection are involved, seek their clearance on what can be shared before you contact parents/carers.
- Contact parents/carers as soon as possible (same day preferred).

Support students through your school

- Support impacted student/s.
- Engage students and parents/carers to find the best support.
- Tailor to diverse needs.
- Use information sharing.
- Continue for as long as necessary.

Refer to community services

- Engage students and parent/carers to find and connect with suitable services.
- Use information sharing.

Key contacts

Child Protection

8:45am to 5pm, Mon-Fri
 North 1300 598 521
 South 1300 555 526
 East 1300 360 452
 West 1300 360 462
 After hours 13 12 78

Independent schools Victoria

- 03 9825 7200
- enquiries@is.vic.edu.au

Victoria Police

- 000 (emergencies)
- 131 444 or local police station (non-emergencies)

The Orange Door

☎

 📍

Local sexual assault service

☎

 📍

