

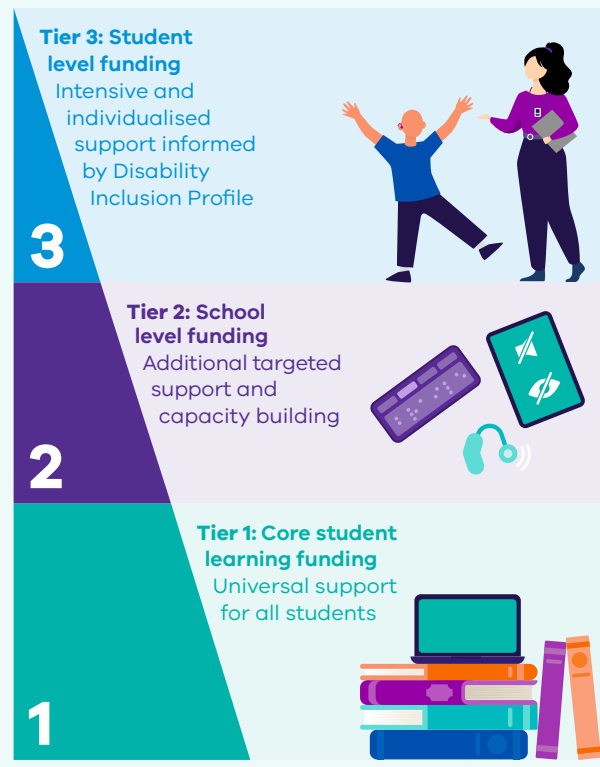
Disability Inclusion Implementation

Disability Inclusion is investing in improving supports for students with disability in Victorian government schools.

Tiered funding model

A new tiered funding model is introducing additional funding to support students with disability.

As of January 2025, all Victorian government schools have transitioned to the Disability Inclusion funding and support model.



Workforce capability building

Disability Inclusion is building knowledge and skills in inclusive education across the school system.

Inclusive Education Scholarships

The [Master of Inclusive Education & Graduate Certificate Initiative](#) offers postgraduate courses designed to strengthen inclusive education by building schools' capacity to support diverse learning needs. As of May 2025, over 520 teachers and department staff have achieved a qualification that actively supports inclusive practice change. With annual application rounds, the number of recipients will continue to grow, creating a lasting impact on both educators and students.

Inclusion Outreach Coaching

[Inclusion Outreach Coaches](#) (IOCs) assist schools to set up schoolwide systems to [build capability, practice and confidence of teachers](#) and other staff to better meet the learning and wellbeing needs of all students, including students with disability and diverse learners.

There are 89 coaching positions available state-wide in 2025. From January 2021 to March 2025, IOCs commenced 484 support agreements with schools, typically lasting two terms, and of these 318 were completed.



Inclusive Classrooms

[Inclusive Classrooms](#) offers a suite of courses for school staff focused on practical teaching strategies, adjustments and supports at the school, classroom and individual levels. From January 2021 to March 2025, there have been 5814 successful blended learning course completions.



Diverse Learners Hub

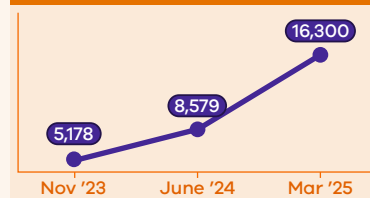
The [Diverse Learners Hub](#) (Hub) is building the capability of all schools across Victoria, providing [evidence-based advice and resources](#) to meet diverse learners' needs. Diverse learners include students with characteristics of autism, ADHD and learning difficulties. The Hub has provided direct support to 234 schools as at February 2025.



Disability Inclusion Profiles

The [Disability Inclusion Profile](#) is a new strengths-based tool that identifies a student's needs to understand how to support them in the classroom. As of April 2025, almost 17,000 Disability Inclusion Profile meetings have been completed.

Disability Inclusion Profile meetings are increasing over time



Over 95% of profile meetings have incorporated student voice.



Stages of implementation

Disability Inclusion is being introduced in stages over five years. It will be implemented in all government schools in Victoria by 2025.

**Year 1
(2021)**

- Bayside Peninsula
- Barwon
- Loddon Campaspe
- Five supported inclusion schools

**Year 2
(2022)**

- Outer Eastern Melbourne
- Central Highlands
- Mallee
- Two supported inclusion schools

**Year 3
(2023)**

- Inner Gippsland
- Ovens Murray
- Western Melbourne
- Three supported inclusion schools

**Year 4
(2024)**

- North Eastern Melbourne
- Southern Melbourne
- Brimbank Melton
- Goulburn

**Year 5
(2025)**

- Hume Merri-bek
- Outer Gippsland
- Wimmera South West
- Inner Eastern Melbourne