

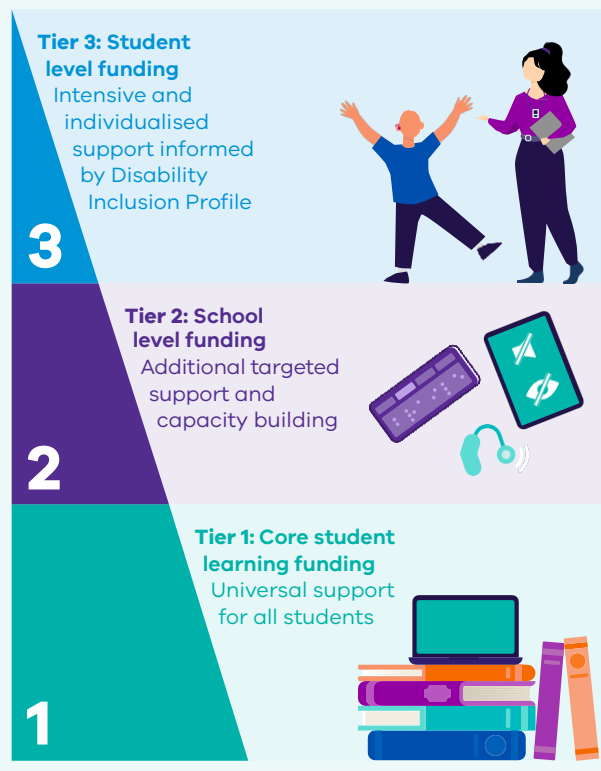
Disability Inclusion Implementation

Disability Inclusion is investing in improving supports for students with disability in Victorian government schools.

Tiered funding model

A new tiered funding model is introducing additional funding to support students with disability.

As of 2026, all Victorian government schools have transitioned to the Disability Inclusion funding and support model.



Workforce capability building

Disability Inclusion is building knowledge and skills in inclusive education across the school system.

Inclusive Education Scholarships

The Inclusive Education Scholarships Initiative empowers schools to support every learner. It offers 8 postgraduate courses across 2 programs, the [Master of Inclusive Education](#) and the [Graduate Certificate](#), designed to strengthen teachers' skills and transform classroom practice. As of March 2026, over 650 educators have enhanced their practice, driving system-wide improvements in inclusive teaching. With annual application rounds, more schools and educators will continue to benefit, embedding a lasting culture of inclusion across the education system.

Inclusion Outreach Coaching

[Inclusion Outreach Coaches](#) (IOCs) assist schools to set up school-wide systems to [build capability, practice and confidence of teachers](#) and other staff to better meet the learning and wellbeing needs of all students, including students with disability and diverse learners.

There are 91 coaching positions available state-wide in 2026. From January 2021 to March 2026, IOCs commenced 665 support agreements with schools, typically lasting two terms, and of these 467 were completed. 510 schools have been supported by an IOC.

Inclusive Classrooms

[Inclusive Classrooms](#) offers a suite of courses for school staff focused on practical teaching strategies, adjustments and supports at the school, classroom and individual levels. From January 2021 to March 2026, there have been 8213 successful blended learning course completions.



Diverse Learners Hub

The [Diverse Learners Hub](#) (Hub) is a Centre of Excellence building the capability of all schools and regional workforces across Victoria, providing [evidence-based advice, resources and guidance](#) to meet diverse learners' needs. Diverse learners include students with characteristics of autism, ADHD and learning difficulties.

Since 2022, the Hub has provided direct coaching and support on whole-school inclusive practice change to 316 schools (18% of all government schools). In 2025, the Hub provided over 40 statewide professional learning opportunities attended by school and regional workforces, and 64 evidence-based responses to inquiries from school and regional workforces, helping them apply a diverse learner lens to their work.

Disability Inclusion Profiles

The [Disability Inclusion Profile](#) is a new strengths-based tool that identifies a student's needs to understand how to support them in the classroom. As of March 2026, over 28,000 Disability Inclusion Profile meetings have been completed.

Disability Inclusion Profile meetings are increasing over



Over 95% of profile meetings have incorporated student voice.



Stages of implementation

Disability Inclusion was introduced to Victorian government schools in five roll-out stages from 2021 to 2025.

